



- ▶ Services the Widest Variety of High Volume Traffic with Varying Widths & Heights
- ▶ Durable Rigid Frame of Either Double Kiln Dried Pressure Treated Lumber or Steel Tube Framing with Raked Header to Permit Drainage
- ▶ Complete with Flexible Translucent Covering to Provide Protection from the Elements & Admit Light
- ▶ 2 Added Layers of Fabric on Side Curtains Reinforce Bottom & Prolong Life
- ▶ Flexible ScotchPly® Stays Enable Curtain to Tightly Seal Against Trailer
- ▶ Durapleat®(s) on the Outer Edge Protect Against Tears
- ▶ Provides Full Unimpeded Access to Interior of Trailer
- ▶ Yellow Guide Stripes to Assist Positioning of Trailers
- ▶ Foam Bottom Draft Pads At Each Side Help Prevent Air Flow Into the Loading Dock Area
- ▶ Steel Bumper Stops Protects From Misguided Trailers

Specifications

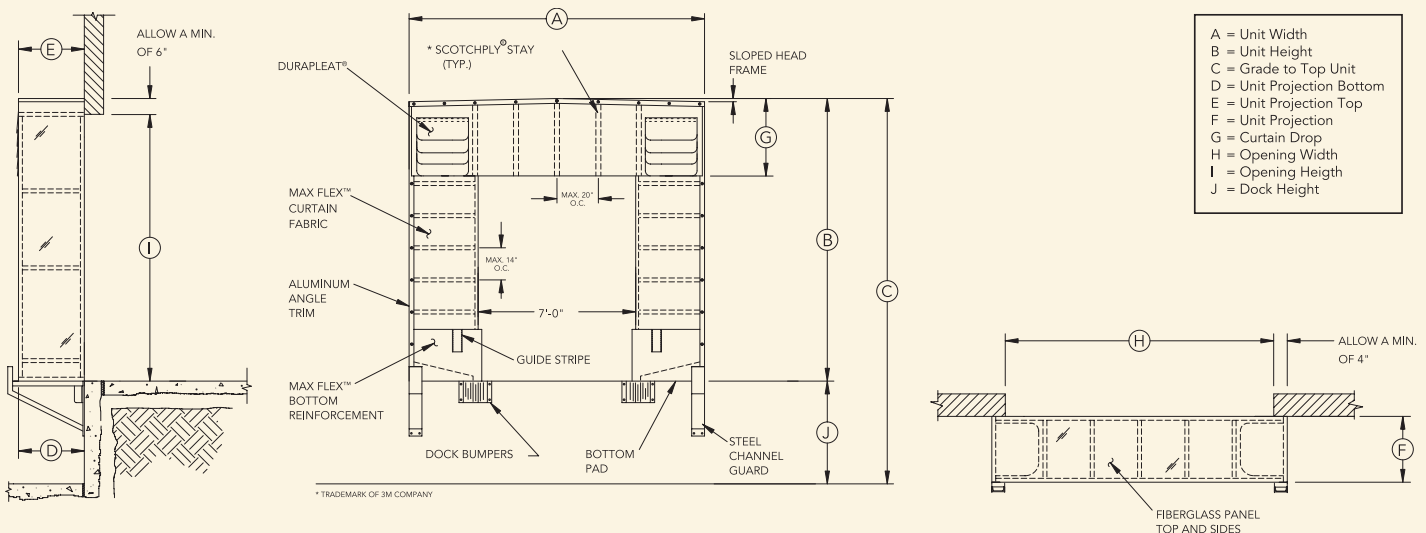
Specifications: Dock Shelters shall be model TC _____ as provided by W.B. McGuire™ Company. Side and head curtain fabric to be _____ as specified. Side curtains to be reinforced with Max Flex™, multi-ply bottom panels, equipped with highly visible guide stripes. Head curtain shall have end and shall be stabilized by wind straps. Side curtain edges shall encase a continuous closed cell neoprene cord. The top section of the side curtain to include a full “Z” stay pattern. All curtains shall encase 3M “Scotchply®” stays (steel not acceptable) enclosed by multi-layer reinforcement sleeves. Stays to be spaced evenly with maximum of 14" O.C. in side curtains and a 20" maximum O.C. in head curtain.

Shelter shall consist of three rigid, select structural grade, pressure treated wood frames, kiln dried before and after treating having translucent fiberglass secured to the exteriors, by the means of self-sealing wood screws (staples not acceptable). The frame shall be assembled with screw shank nails and head frame with counterbored lag screws to maintain greater structural integrity. (Steel frames are optional.) The 2" x 6" head frame shall be sloped from center to provide for adequate drainage. Exterior frame corners shall be trimmed with aluminum angle. One pair of covered polyurethane foam bottom draft pads of 8" to 2" wedge design to be furnished per shelter. All hardware shall be galvanized steel. Unit shall include two factory painted 6" structural steel channel guards.

Options

- Base Fabric:** (in a variety of colors)
- Max Flex™ (heavy usage)
 - Truk Flex™ (heavy usage)
 - Rough Flex™ (medium usage)
 - 22 oz. Vinyl (medium usage)
 - 40 oz. Vinyl (medium/heavy usage)

- Options:**
- Additional projections beyond 24" standard
 - Tapered units
 - Common member frames – steel tube framing



W.B. McGuire™ Company
 205 Broadview Street
 P.O. Box 151
 Upper Sandusky, OH 43351
 Phone 1.800.262.1188
 Fax 419.294.4980
www.wbmcguire.com